



KAMADOJOE®

Konnected Joe - Component Troubleshooting

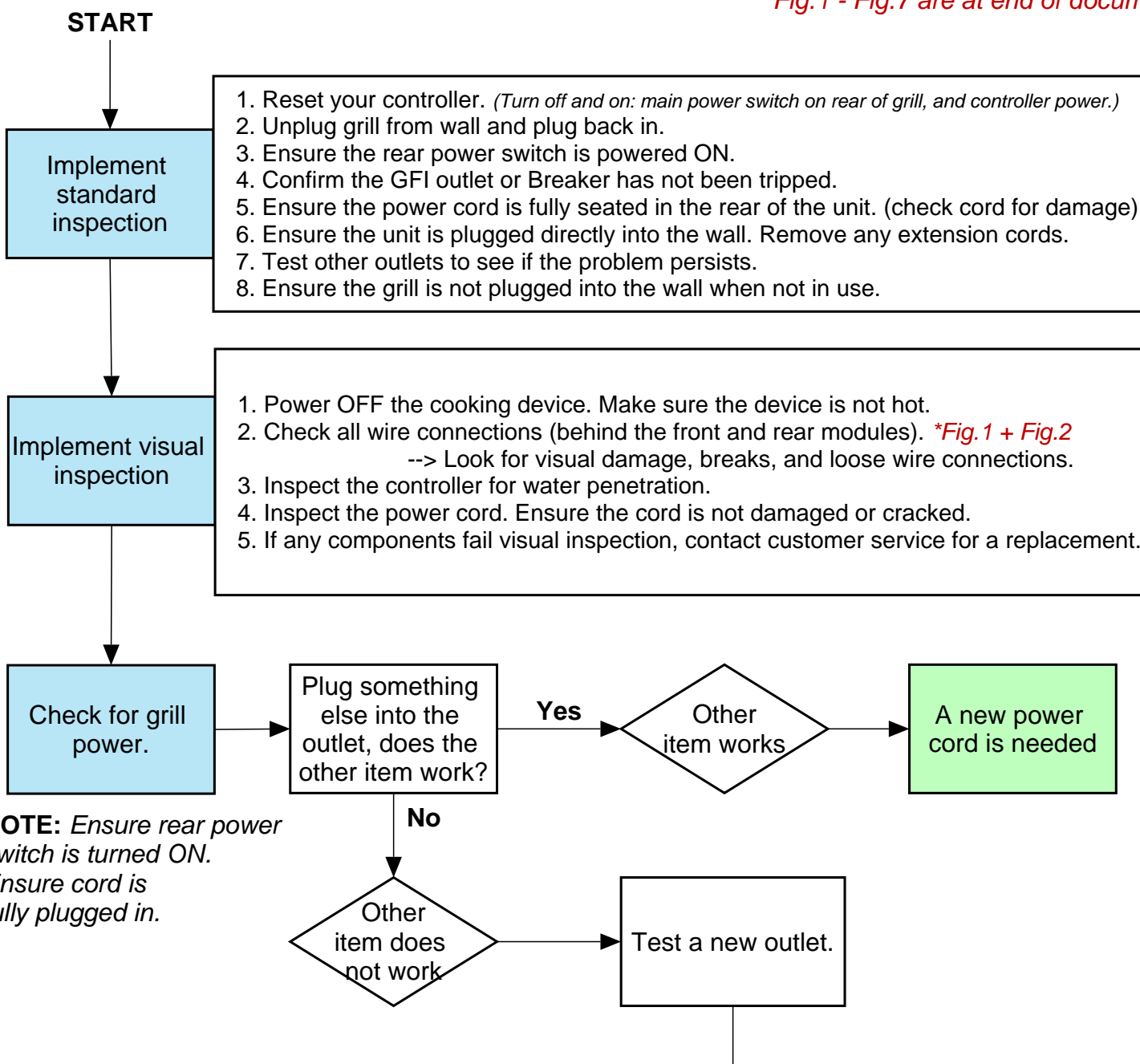
WELCOME:

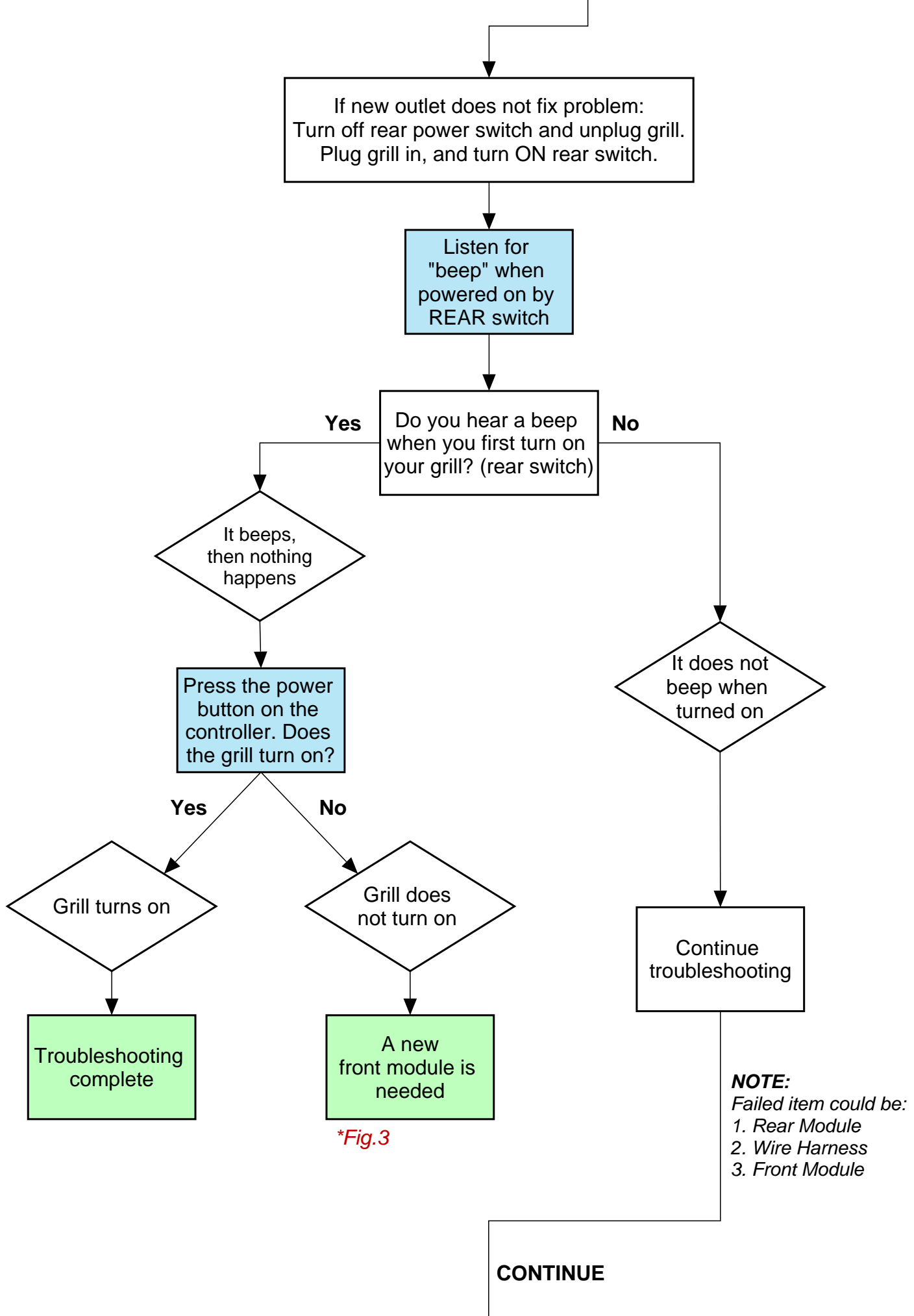
This document will help you identify if one of your KJ components needs to be replaced.

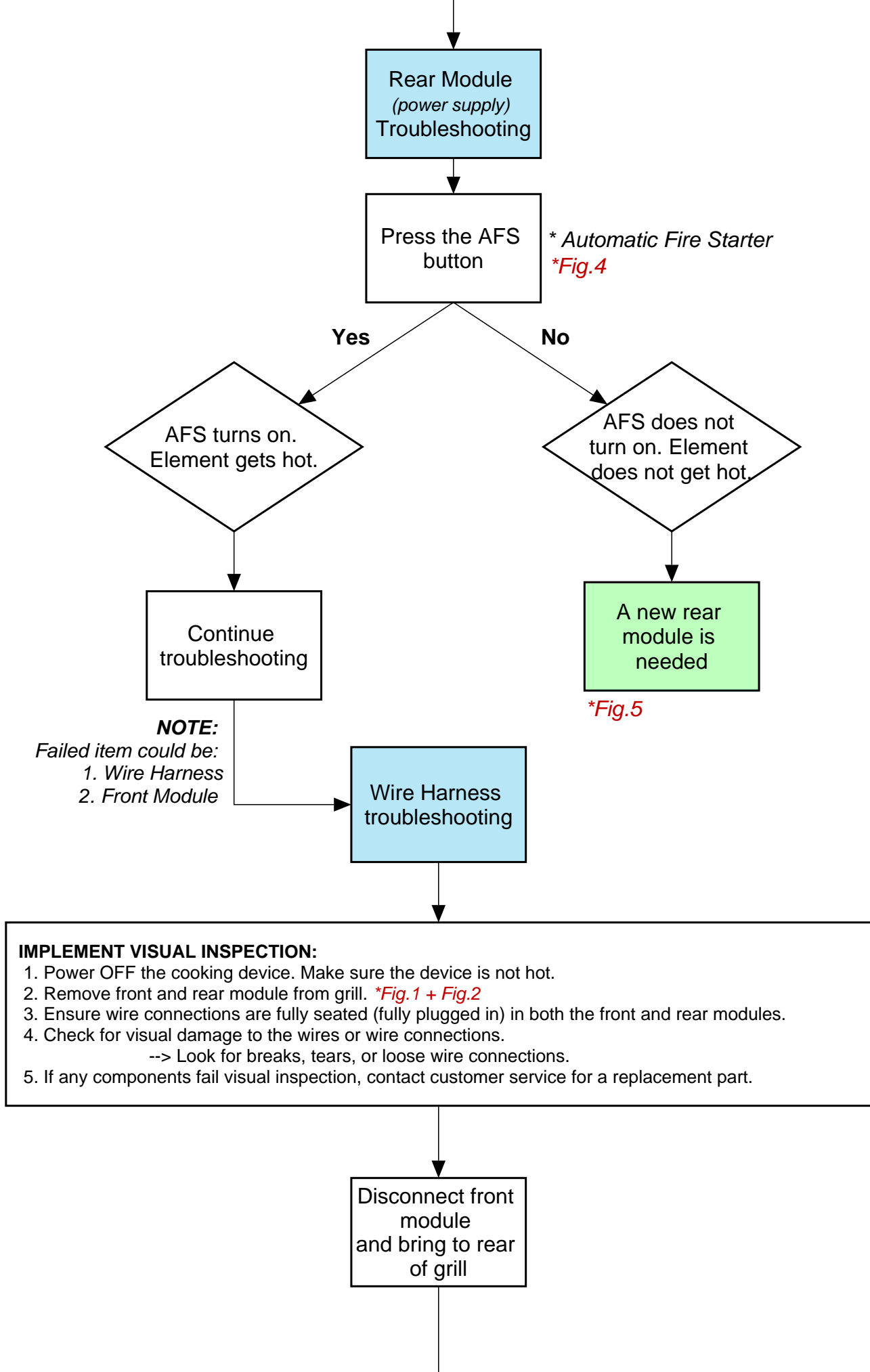
Please reference this document for any of the following concerns:

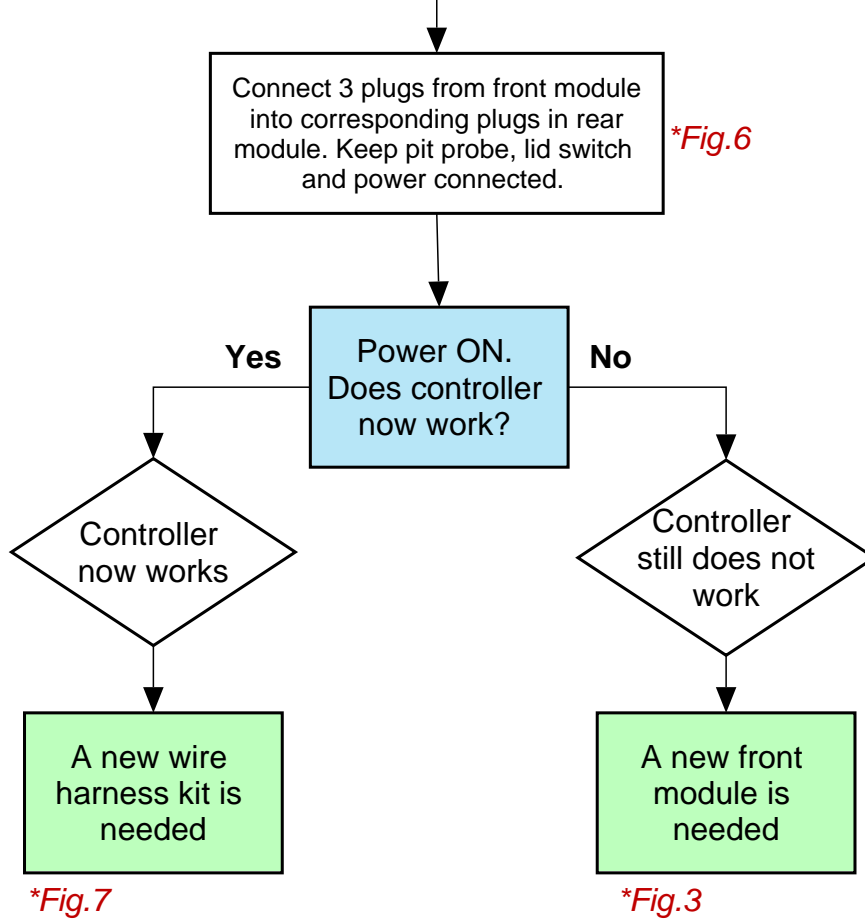
- My grill won't turn on
- My controller won't turn on
- My controller isn't working properly
- My controller freezes during use

**Fig.1 - Fig.7 are at end of document*









SCROLL FOR FIGURES

FIGURES

**Fig.1 (front module + connections)*



**Fig.2 (rear module + connections)*



**Fig.3 (front module)*



**Fig.4 (AFS - automatic fire starter)*



AFS BUTTON

**Fig.5 (rear module)*



**Fig.7 (wire harness kit)*



**Fig.6 (wire harness troubleshooting)*



Connect 3 plugs from front module into 3 corresponding plugs in rear module.

***NOTE 2: Keep pit probe, lid switch, and power connected to rear module.**

***NOTE 1: to make easier, disconnect element plug from rear module + grill.**

