

OWNER'S MANUAL



UNIVERSAL TABLETOP STAND

Model #8760



**Keep your receipt with
this manual for Warranty.**

CUSTOMER SERVICE

1-912-638-4724

Service@CharGriller.com

Contents of this manual are Trademarked and Copyrighted by Char-Griller® | A&J Manufacturing
Using the information contained in this manual without consent of Char-Griller® and/or A&J Manufacturing is strictly prohibited.

**This Page Intentionally
Left Blank**



TABLE OF CONTENTS

Safety Warnings & Warranty.....	A-1
Assembly Instructions	B-1

*** STOP! CALL FIRST! ***

Do NOT Return Product to Store.

This stand has been made according to the highest of quality standards. If you have any questions not addressed in this manual or if you need parts please call our Customer Service Department at 1-912-638-4724 (USA) or email Char-Griller® at: Service@CharGriller.com and have your serial number handy.

REGISTER YOUR STAND:

To take full advantage of the Char-Griller® warranty be sure to register your stand by visiting www.CharGriller.com/Register or calling Customer Service at 1-912-638-4724.

Registration provides important protections:

1. In the extremely unlikely event of a product recall Char-Griller® can easily contact you and rectify the issue.
2. If a warrantied part is broken or missing we can send you the needed parts promptly.

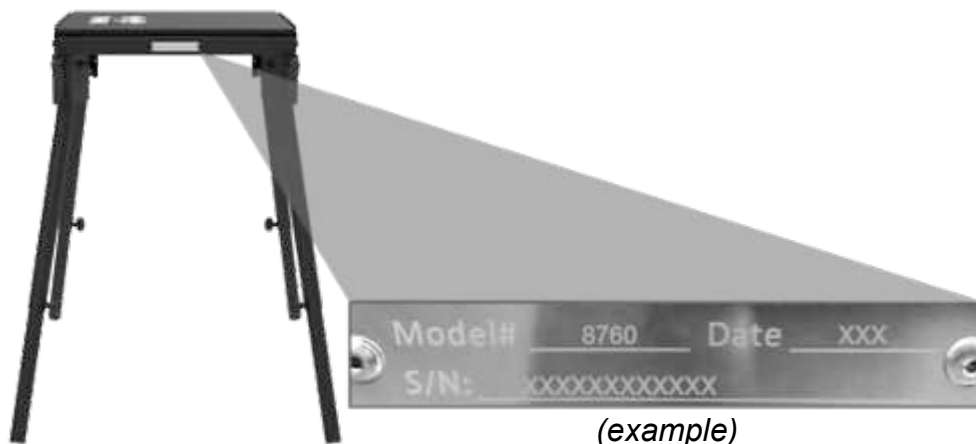
NOTE: You will need your model #, serial number, and a copy of the original sales receipt when registering.



Document Your Serial Number HERE:

(Serial number is located on the back of the stand body or on the leg.)

(SERIAL #)





WARRANTY INFORMATION

A COPY OF THE DATED PROOF OF PURCHASE (RECEIPT) IS REQUIRED WHEN REGISTERING OR SUBMITTING A WARRANTY* CLAIM. PLEASE RETAIN A COPY OF THE RECEIPT FOR YOUR RECORDS.

Char-Griller® will replace any defective part of its grillers/smokers, under warranty, as outlined below.

PLEASE READ THIS INFORMATION IN DETAIL AND IF YOU HAVE ANY QUESTIONS CONTACT CUSTOMER SERVICE AT 1-912-638-4724 OR SERVICE@CHARGRILLER.COM.

Charcoal / Pellet / Kamado Grills	
Grill - Hood and Body (excludes removable Ash Pan)	5 years from date of purchase for rust through / burn through
Ash Pan and Defective Parts	1 year from date of purchase
Gas Grills	
Grill Hood and Main Burner Tubes (excludes Side Burner)	5 years from date of purchase for rust through / burn through
Grill Body and Side Burner and Defective Parts	1 year from date of purchase
Griddles	
All Defective Parts	1 year from date of purchase
Dual Fuel Grills (Gas & Charcoal)	
Charcoal Grill - Hood and Bottom and Gas Grill Hood (TOP half) and Main Burner Tubes (excludes Ash Pan and Side Burner)	5 years from date of purchase for rust through / burn through
Ash Pan and Defective Parts and Gas Grill Body (BOTTOM half) and Side Burner	1 year from date of purchase
Parts, Accessories, and Grill Covers	1 year from date of purchase (seam tears only for covers)

SURFACE RUST IS NOT CONSIDERED A MANUFACTURING OR MATERIALS DEFECT

Char-Griller® grills are made of steel and if exposed to the elements rust will occur naturally. Please refer to the section entitled, "Usage" to review how to care for your grill properly.

Surface issues such as scratches, dents, corrosion or discoloring by heat, abrasive and chemical clearers, surface rust or the discoloration of steel surfaces are NOT covered under these warranties.

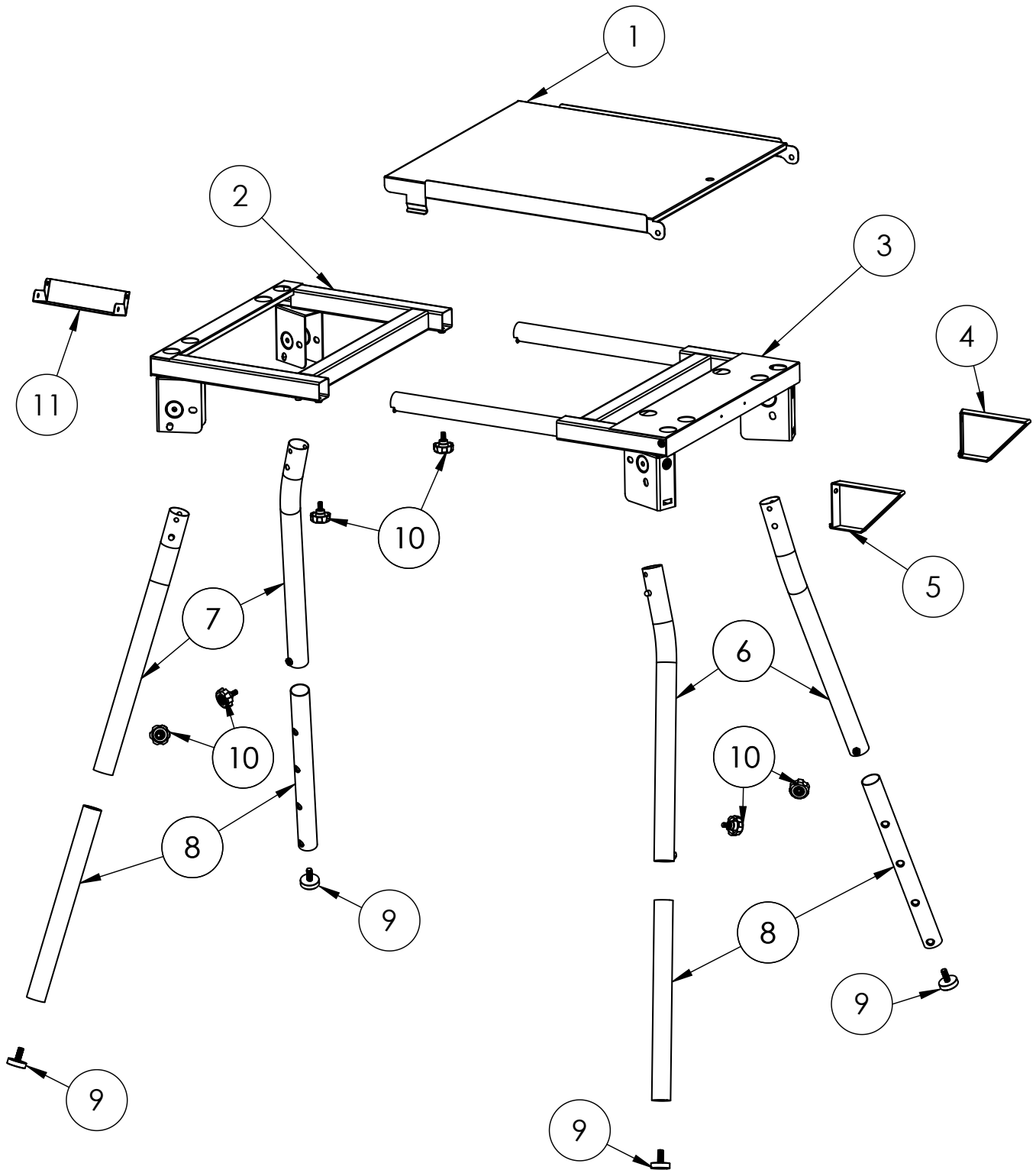
Warranties are for the replacement of defective parts only. Char-Griller® is not responsible for damage resulting from accident, alteration, misuse, abuse, hostile environments, improper installation, and installation not in accordance with local codes of service of unit.

Excluded Under ALL Warranties

Paint; Surface Rust; Heat Damage; Incorrect Parts ordered by customer, including shipping; Worn Parts; Missing or damaged parts not reported within two (2) months of purchase date; Defective parts not reported within one (1) year of purchase date; Fading grill cover.

*NOTE: For warranty claims, photos and prepaid return of the item in question may be required. Misuse, abuse or commercial use nullifies all warranties.

ASSEMBLY INSTRUCTIONS





PARTS LIST


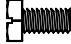
Item	QTY	Part Name
1	1	SIDE SHELF/LID
2	1	LEFT BODY ASSEMBLY
3	1	RIGHT BODY ASSEMBLY
4	1	SIDE SHELF SUPPORT - REAR
5	2	SIDE SHELF SUPPORT - FRONT
6	2	UPPER RIGHT LEG
7	2	UPPER LEFT LEG
8	4	LOWER LEG
9	4	LEG ADJUSTER SCREW
10	6	STAR GRIP BOLT
11	1	1 LB. TANK SUPPORT BRACKET

HARDWARE NEEDED

Tools Needed: Phillips Head Screwdriver and a 7/16" Nut Driver.

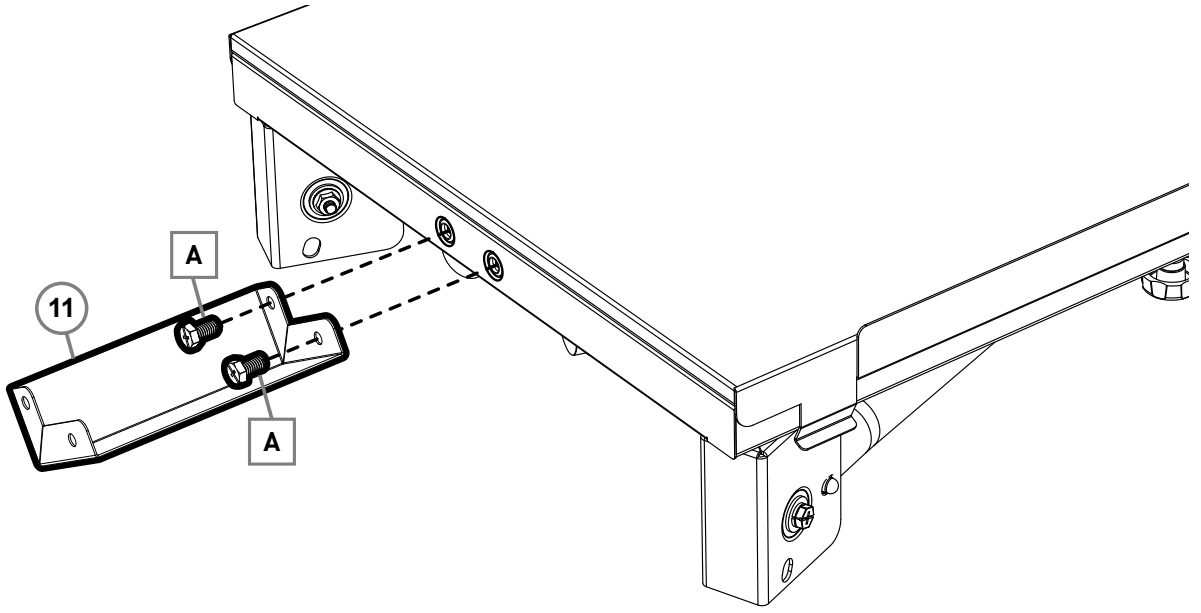
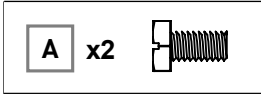
****NOTE: DO NOT fully tighten any bolts until instructed to do so. Tightening too soon may prohibit parts from fitting together. All hex nuts should be on the inside of the stand unless stated otherwise. Unpack all contents in a well cleared and padded area.****

Estimated Time: 20 minutes

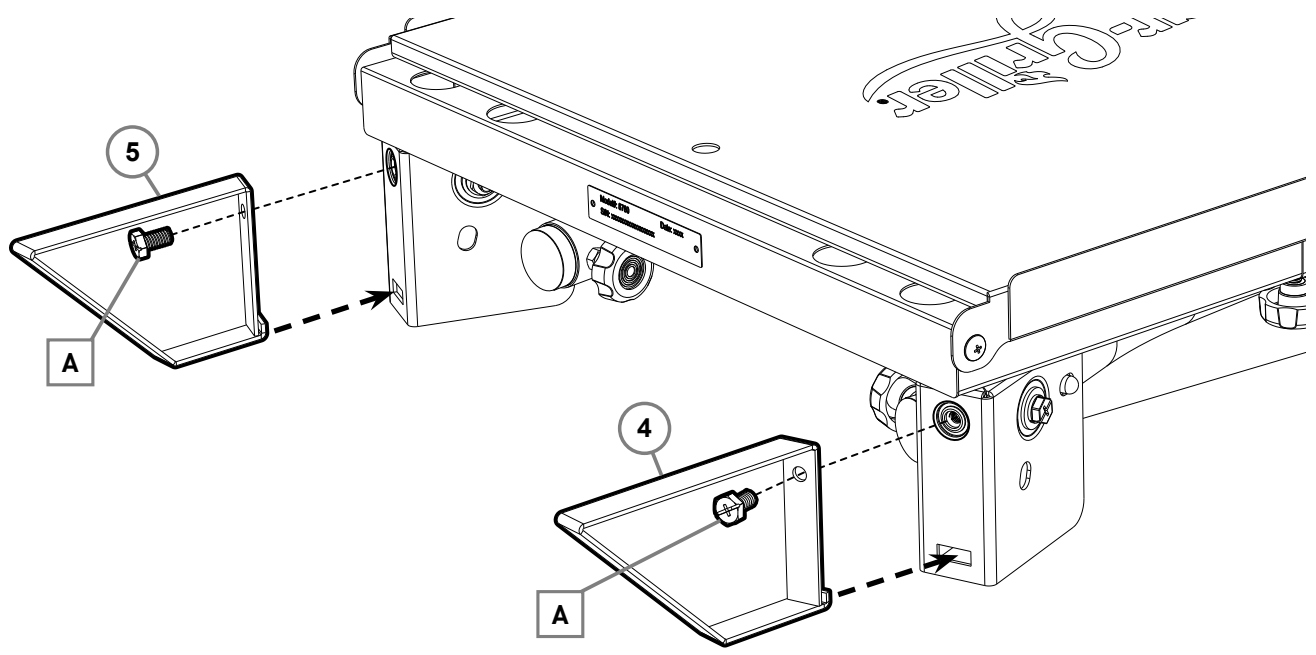
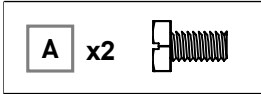
Part No.	Description	Photo	QTY
A	1/4-20 x 1/2" HEX BOLT	 	4

Hardware Pack #501139

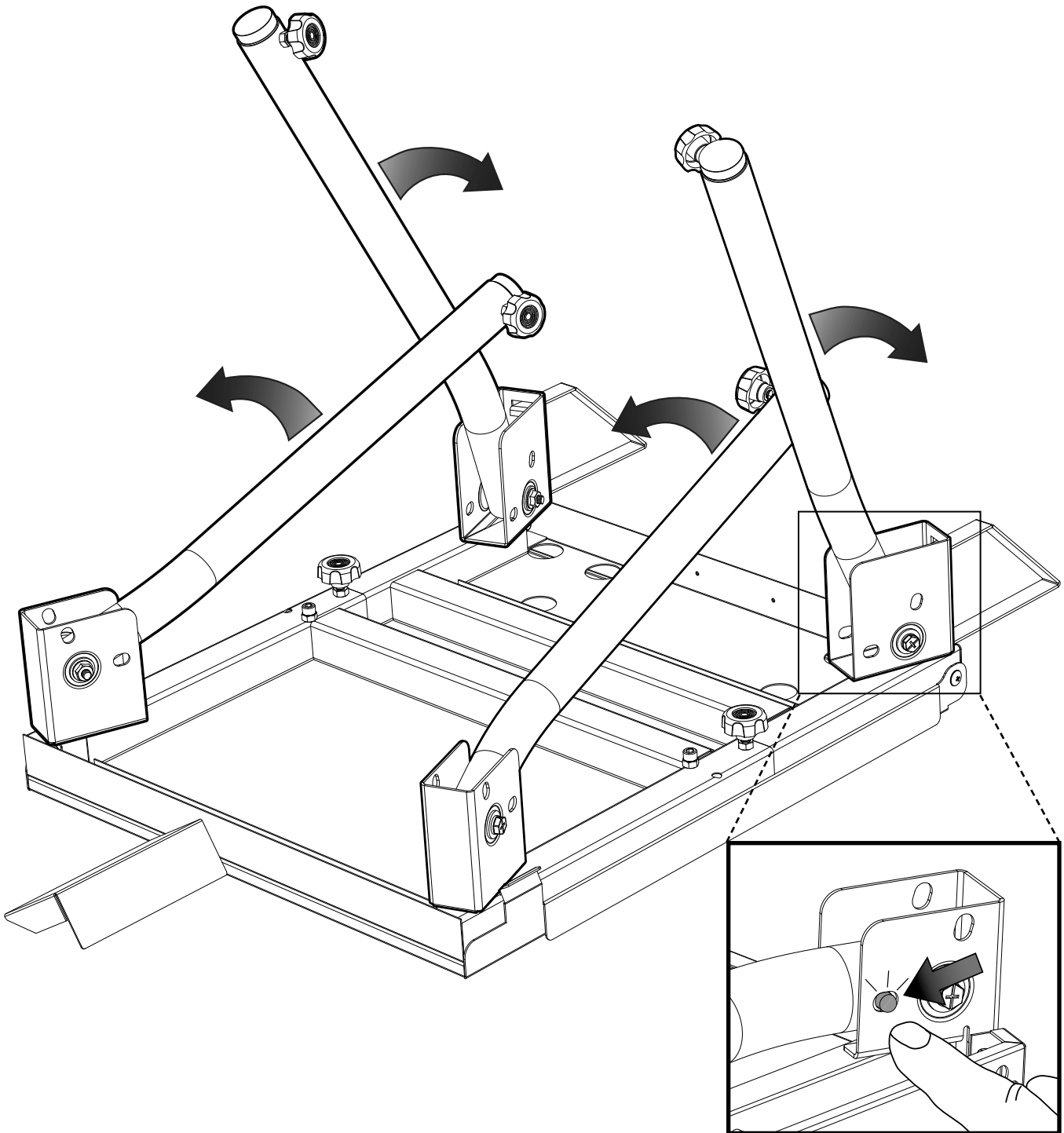
STEP 1



STEP 2



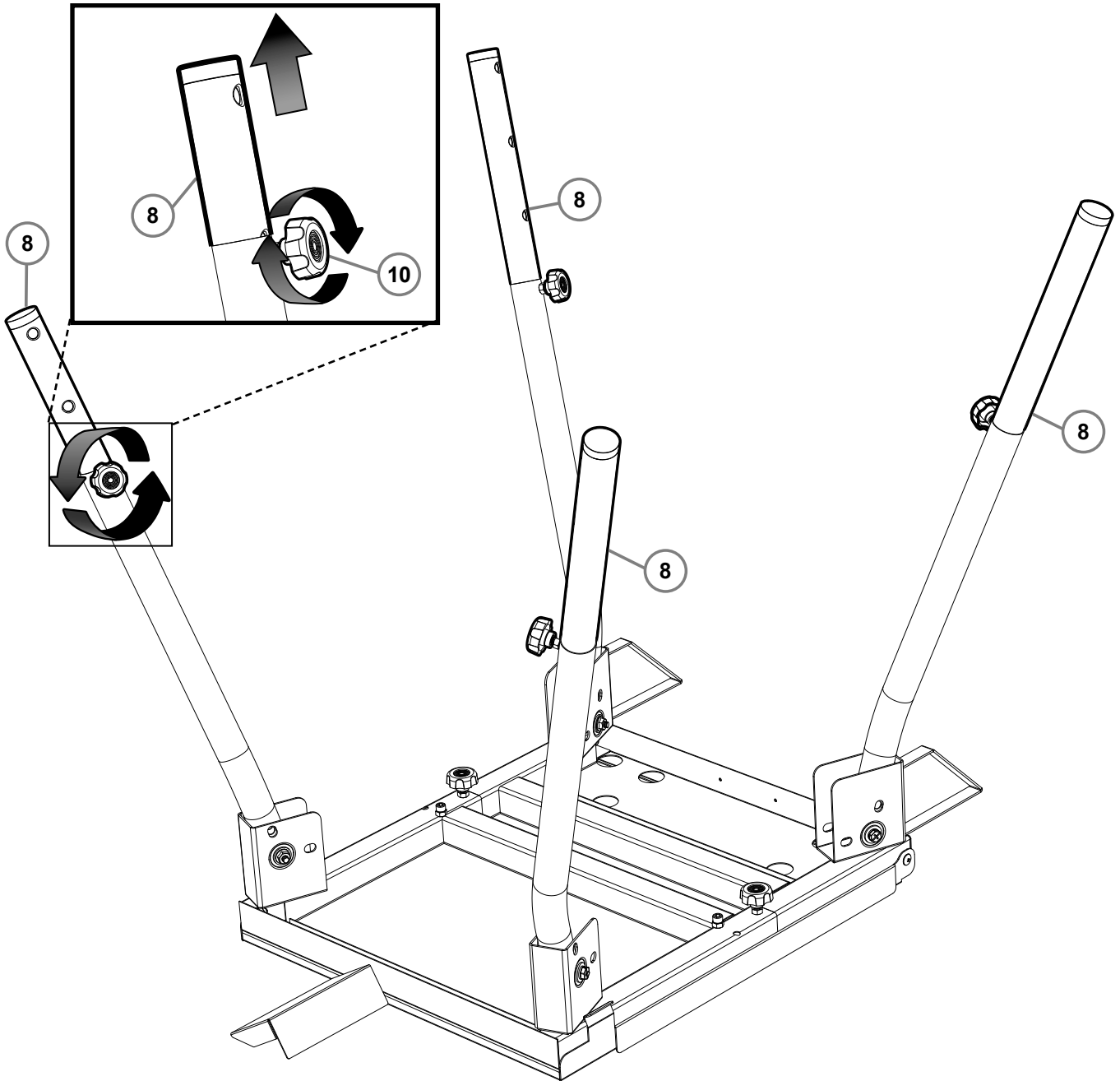
STEP 3



PRESS TO RELEASE

STEP 4

TWIST KNOB AND EXTEND LEGS
(REPEAT FOR ALL LEGS)

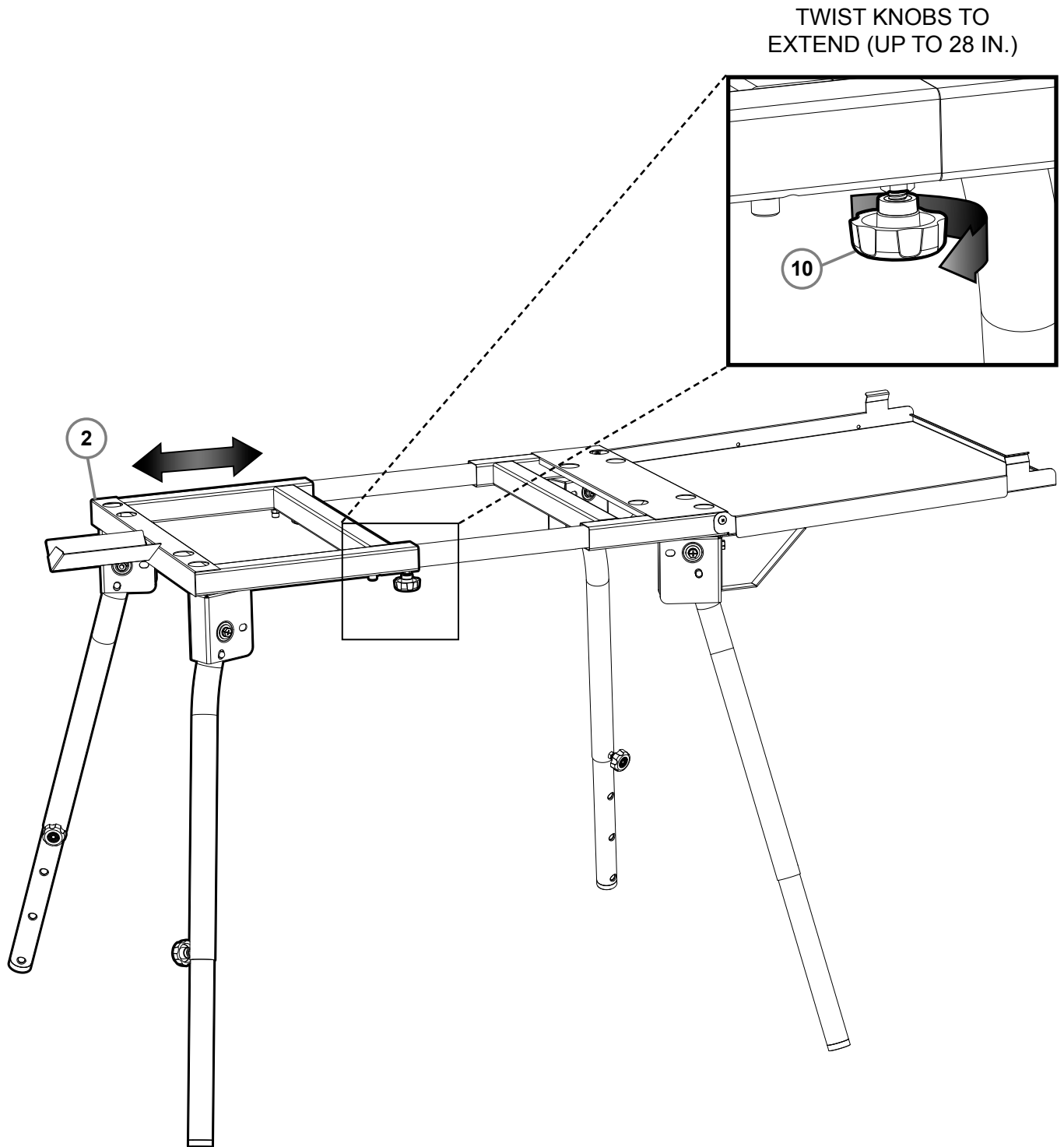




STEP 5



STEP 6





FULLY ASSEMBLED

To ensure sturdy assembly, tighten all BOLTS.



USE AS A GRIDDLE STAND
Shown with a 17" Portable Griddle*
(Model 8217)



USE AS A GRILL STAND
Shown with a Portable Tabletop Grill*

*Stand only, grill and griddle sold separately

**This Page Intentionally
Left Blank**

**This Page Intentionally
Left Blank**



P.O. Box 30864
Sea Island, GA 31561
1-912-638-4724
www.CharGriller.com
Service@CharGriller.com

