

MASTERBUILT®

Magnetic Hopper Switch Replacement, Gravity Series



CAUTION



- Always remove plug from outlet before servicing your grill.
- Make sure your grill has fully cooled to avoid burns.
- Some components may have sharp edges. Use caution to avoid injury.

NOTE: Your hopper may look different than the image shown. The top switch can be found in the top hopper door hinge. The bottom switch can be found on the latch side of the bottom hopper door. Both switches have been provided. The top switch has a longer wire.

Note: Your grill may vary from images shown

STEP 1

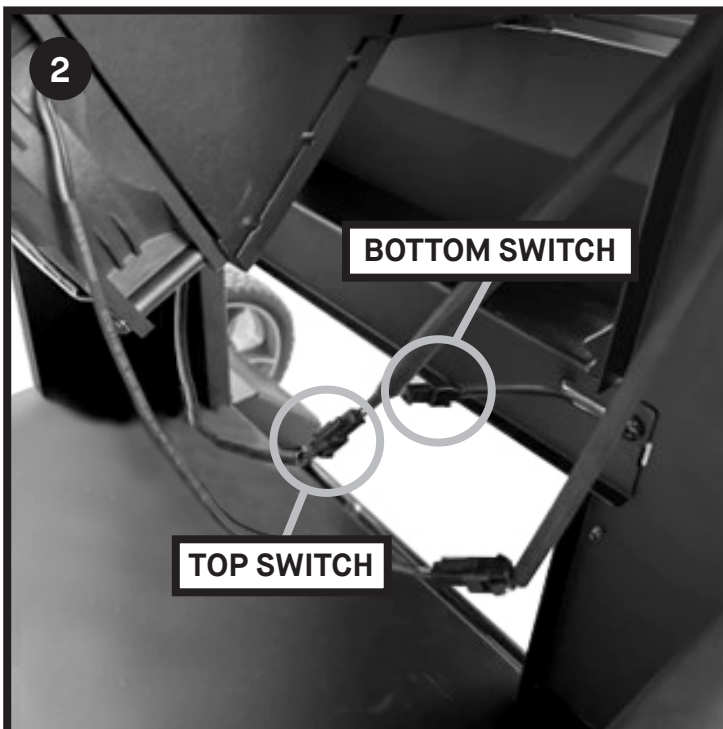
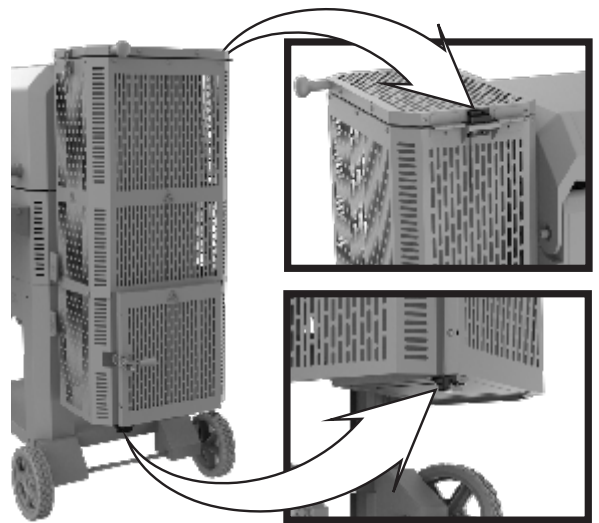
IDENTIFY THE SWITCH TO REPLACE:

If the controller is displaying HOPR and both the hopper doors are closed, you need to replace one or both of the switches (top and/or bottom).

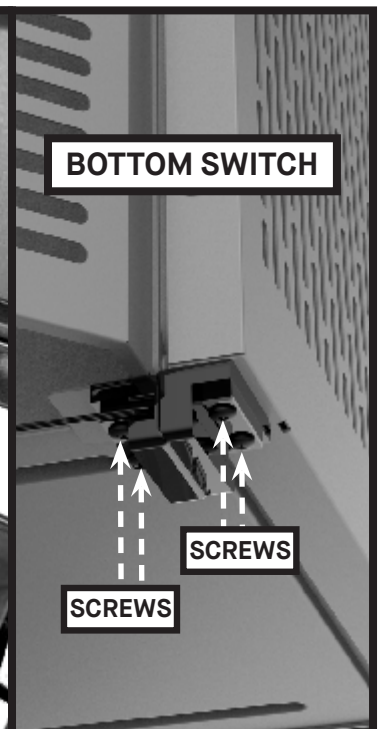
You can identify which switch needs replacing if you do not wish to replace both switches.

Follow the steps below:

1. Close both hopper doors
2. Open the top hopper door (the controller should display HOPR)
3. Place a magnet on the switch
4. Is HOPR still displaying on the controller?
 - 4A. HOPR is removed from the controller = replace the top switch
 - 4B. HOPR is still on the controller = move to step 5
5. Close the top hopper door.
6. Open the bottom hopper door (the controller should display HOPR)
7. Place a magnet on the switch
8. Is HOPR still displaying on the controller?
 - 8A. HOPR is removed from the controller = replace the bottom switch
 - 8B. HOPR is still on the controller = replace both switches

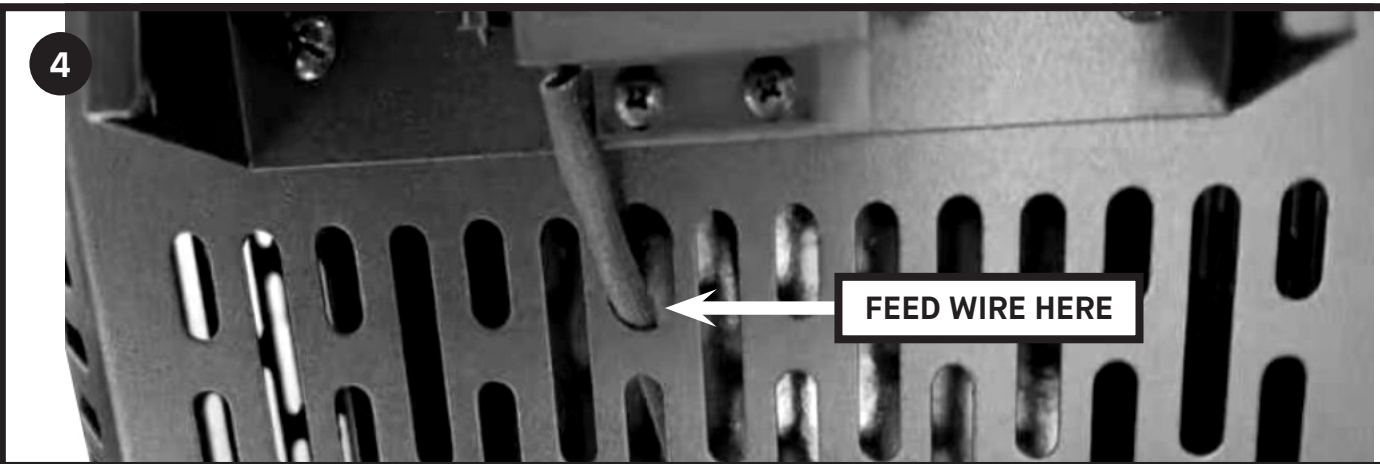


Unplug the failed switch from near the fan.



Remove the 4 screws to remove the failed switch. Replace with the new switch. Be sure to plug the new switch into the wire harness near the fan.

4



TOP SWITCH ONLY: Feed the wire through the hopper shroud to reach the connection point near the fan.
The top switch is the one with the longer wire.