

MASTERBUILT®

Top Hopper Instruction Sheet

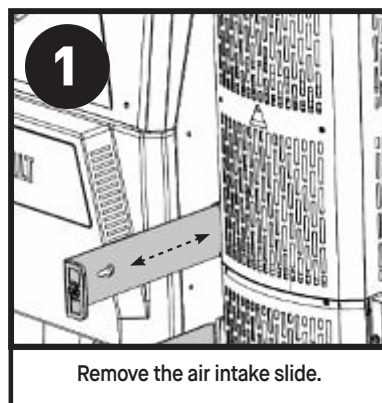
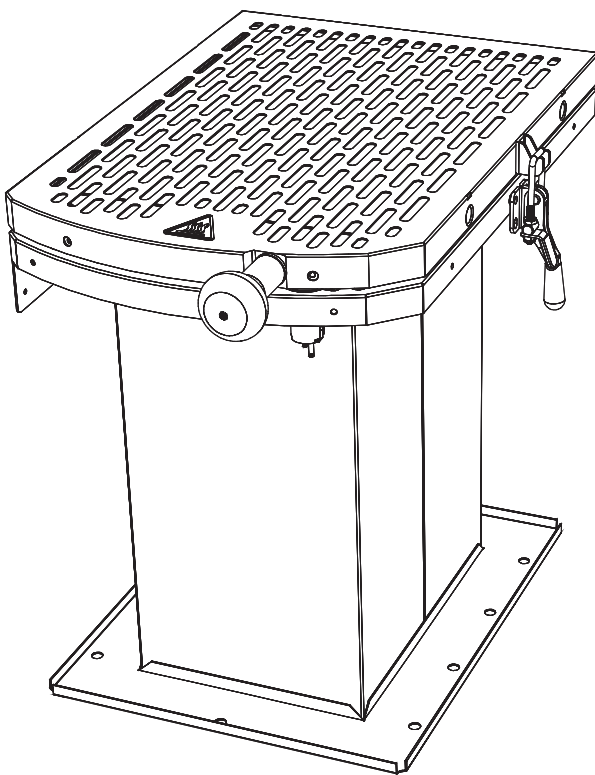
Gravity Fed Grill CGP24G1D, CGP28G1D, CGP30G1D



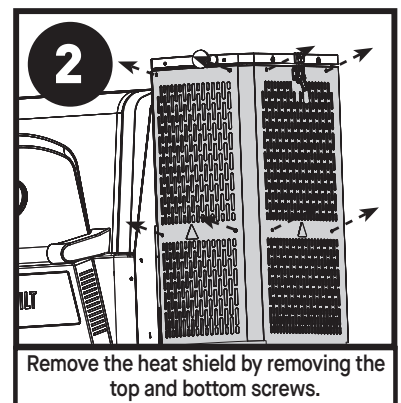
CAUTION



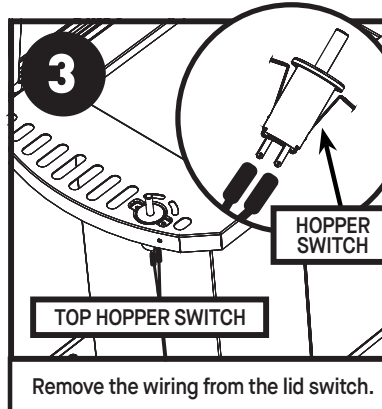
- Always remove plug from outlet before servicing your grill.
- Make sure your grill has fully cooled to avoid burns.
- Some components may have sharp edges. Use caution to avoid injury.



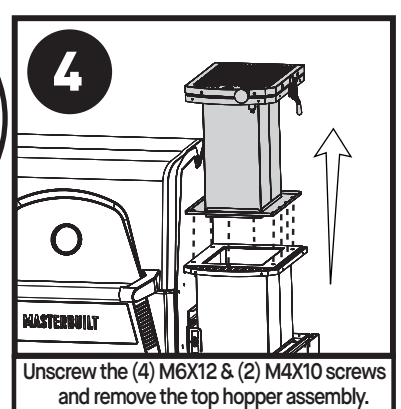
Remove the air intake slide.



Remove the heat shield by removing the top and bottom screws.



Remove the wiring from the lid switch.



Unscrew the (4) M6X12 & (2) M4X10 screws and remove the top hopper assembly.

INSTALLATION:

- Secure the top part of the hopper to the middle by screwing it in with six (6) M6X12 and (4) M4X10 screws see (Step 4).
- Secure wiring to new lid switch see (Step 3).
- Secure the protective heat shield in place on the top and middle sections of the hopper see (Step 2).
- Insert the air intake slides see (Step 1).