

MASTERBUILT®

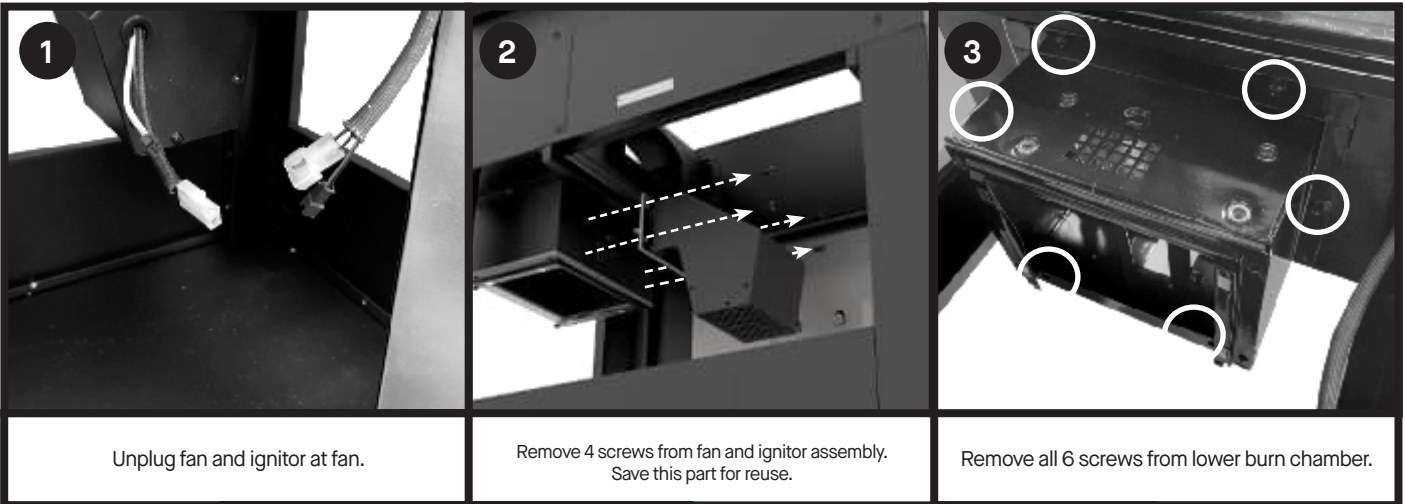
Autolignite 545 Lower Burn Chamber Replacement

MB20041124, MB20042724



- Make sure the grill has cooled completely before handling to avoid burns.
- Some components may have sharp edges. Use caution and wear protective gloves to avoid injury.
- Power OFF the grill and disconnect the power from the wall before handling.

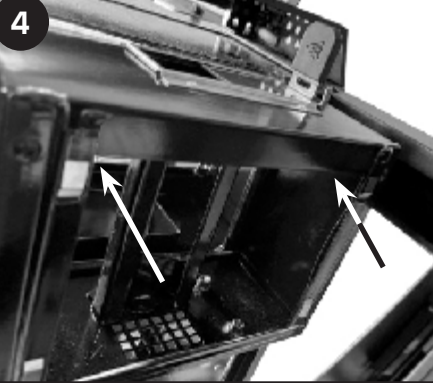
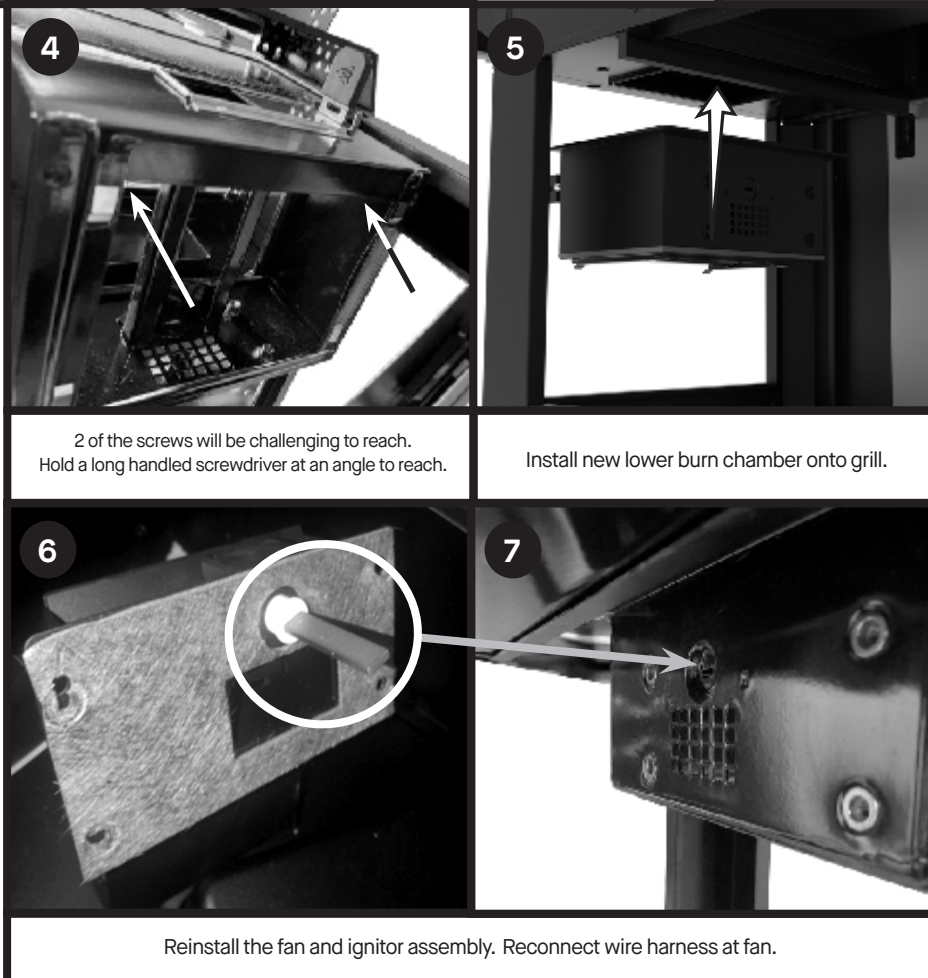
Tool needed for access and replacement: Phillips head screwdriver.



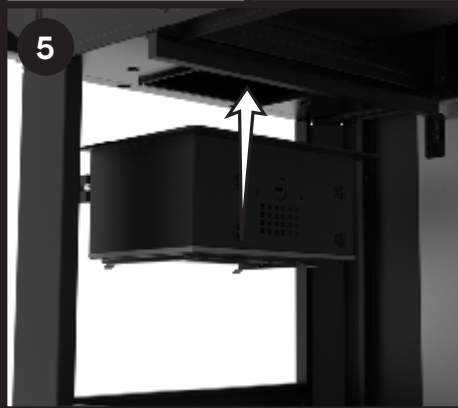
1 Unplug fan and ignitor at fan.

2 Remove 4 screws from fan and ignitor assembly. Save this part for reuse.

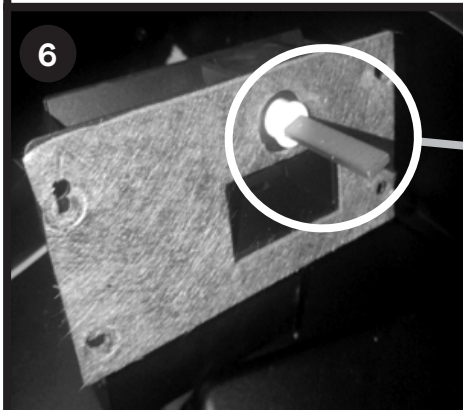
3 Remove all 6 screws from lower burn chamber.



4 2 of the screws will be challenging to reach. Hold a long handled screwdriver at an angle to reach.



5 Install new lower burn chamber onto grill.



6 Reinstall the fan and ignitor assembly. Reconnect wire harness at fan.

