

MASTERBUILT®

Autolignite 545 Temp Probe Kit Replacement

MB20041124, MB20042724

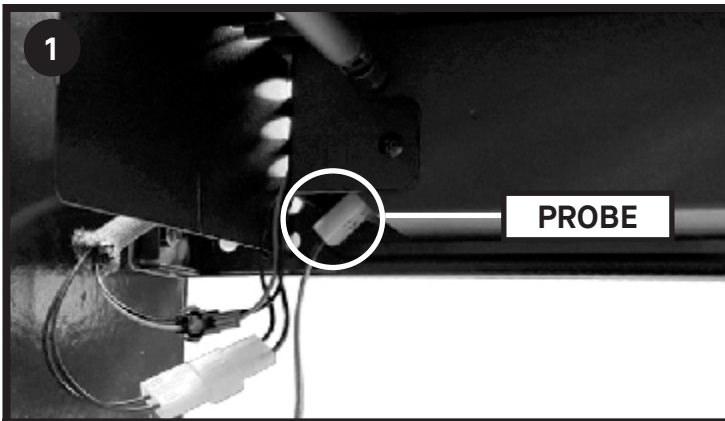


CAUTION

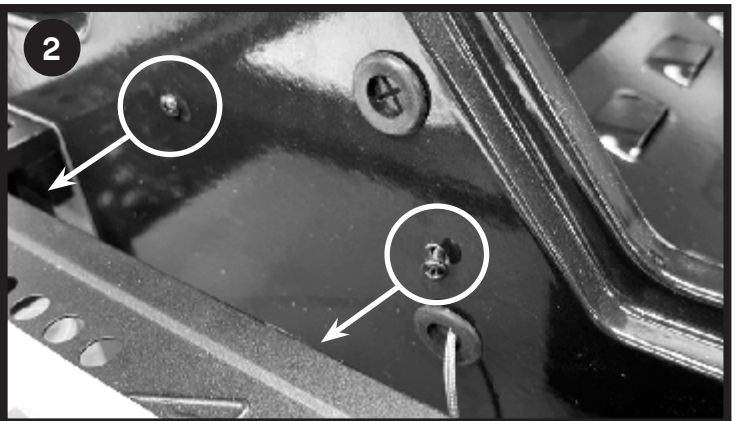


- Make sure the grill has cooled completely before handling to avoid burns.
- Some components may have sharp edges. Use caution and wear protective gloves to avoid injury.
- Power OFF the grill and disconnect the power from the wall before handling.

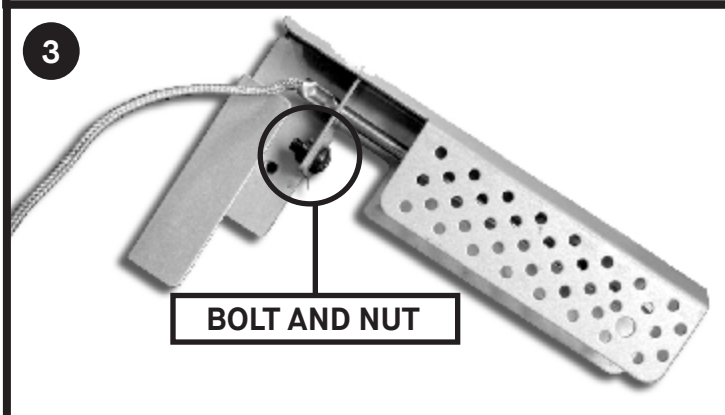
Tool needed for access and replacement: Phillips head screwdriver.



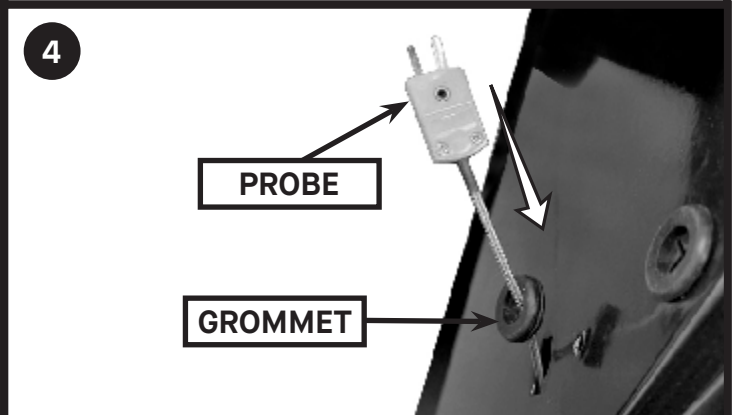
1
Unplug temperature probe from the controller
(this is found under the side shelf).



2
Remove 2 screws from outside the grill.



3
Remove temp probe and bracket from grill.
Remove bolt and nut that secures the old temp probe to the bracket.



4
Remove grommet from temp probe.
Feed the yellow end of temp probe into grill body to remove.

Installation:

- Secure new temp probe to bracket.
- Push yellow end of temp probe through grill.
- Resecure grommet.
- Resecure bracket.
- Plug temp probe back into controller.