

MASTERBUILT®

Lid Kit, GSGXT

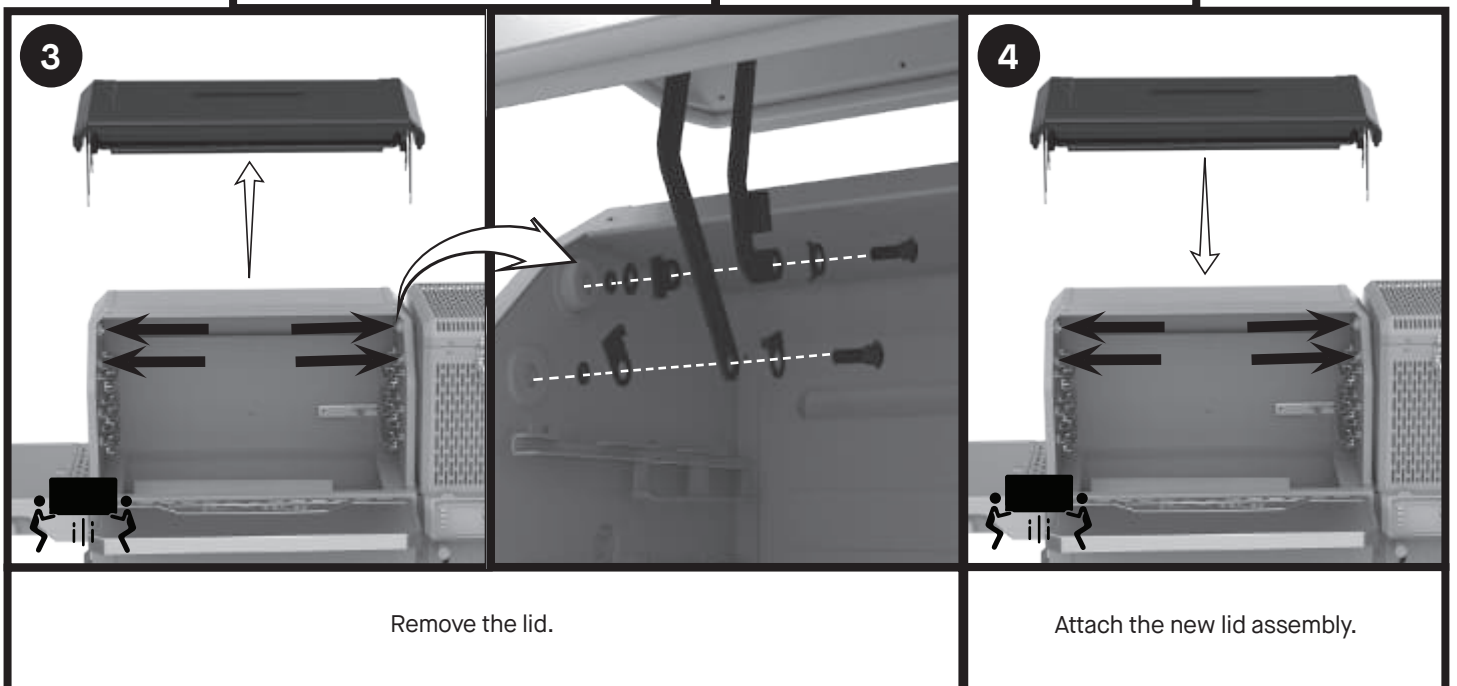
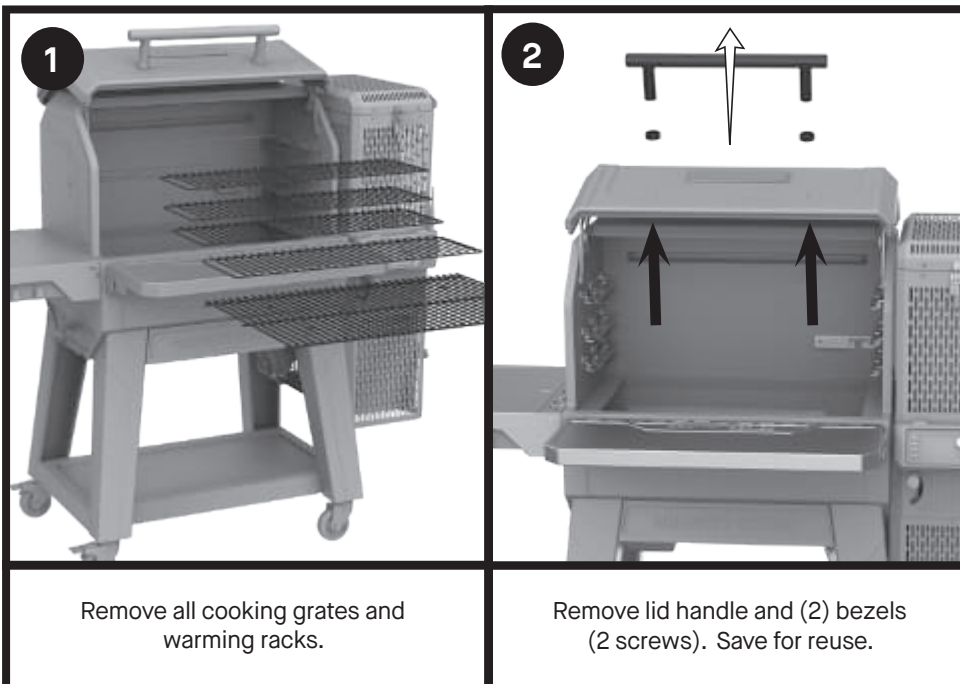
MB20041223, MB20043024



CAUTION

- Always remove plug from outlet before servicing your grill.
- Make sure your grill has fully cooled to avoid burns.
- Some components may have sharp edges. Use caution to avoid injury.

Note: Your grill may vary from images shown



For the remaining installation, follow all steps in reverse. Start at step 2.

NOTE: it is recommended to have a second party help in holding the lid when trying to uninstall and reinstall.